



Session 6

EAFm plans: **the link** between policy and action

Essential EAFm training
Date | Place



Session objectives

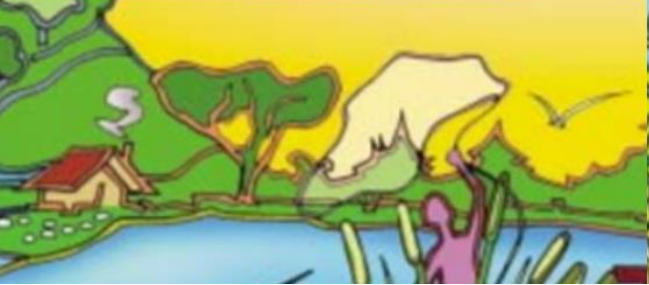
After this session you will be able to:

- Recognize the need for effective planning
- Understand how to translate policies into action

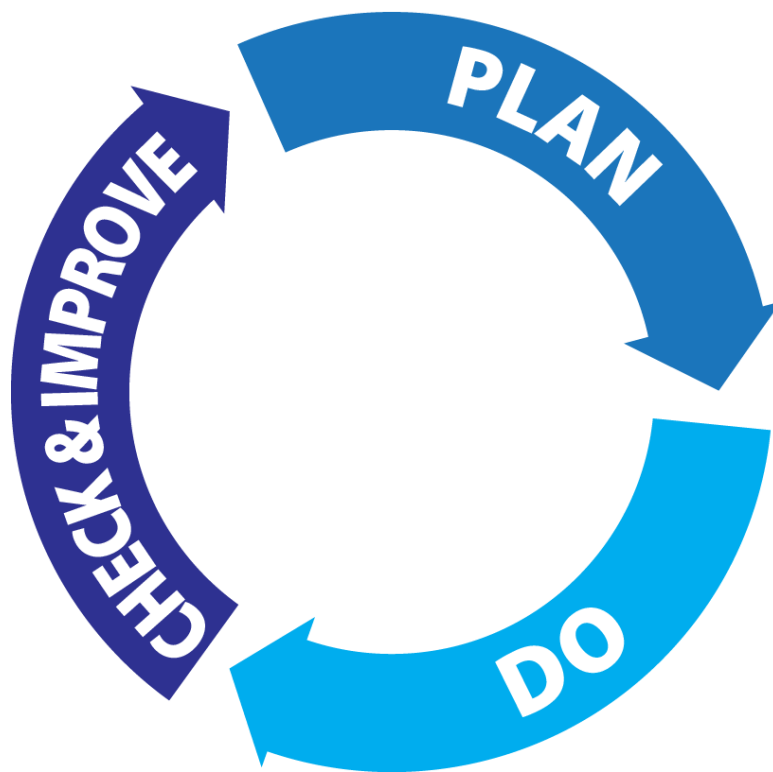


Why plan?

- Plans are needed to implement policies
- Promote resource use efficiency
 - Provides more certainty on the roles and responsibilities of the different players
- Facilitates resource (people and money) mobilization
- Encourages participation and ownership in the management process



Management involves:





EAfm PLAN: linking legislation & policy to action

Legislation/policy



EAfm PLAN



Management actions

Example:

Sustainably managed fisheries

Limit fishing effort in lake nursery areas

Enforce closed season and control number of illegal fishing gears



EAFm PLAN: links legislation & policy to action

Example:

Healthy aquatic environment

*Restore and protect habitats
and biodiversity*

*Designate a conservation area
to prevent fishing in selected
areas*





Good planning

- Provides a clear sense of direction
- Promotes transparency
- Considers alternative options to achieve the goals
- Is based on the best information available (improves over time)



Outputs from planning

Ideally, EAFm sits within broader planning:

- National five-year plan
- Basin Plan, Irrigation, Environment, Fishery Agency Development plans
- **EAFm plan**



Work plans: who, what, and when



Key messages

- High level principles and policies can not be implemented as they stand
- EAFm plans provide a link between higher level policy (e.g. National fisheries policy) and management actions on the ground
- In this way, management actions in EAFm will contribute to implementation of the high level policies over time